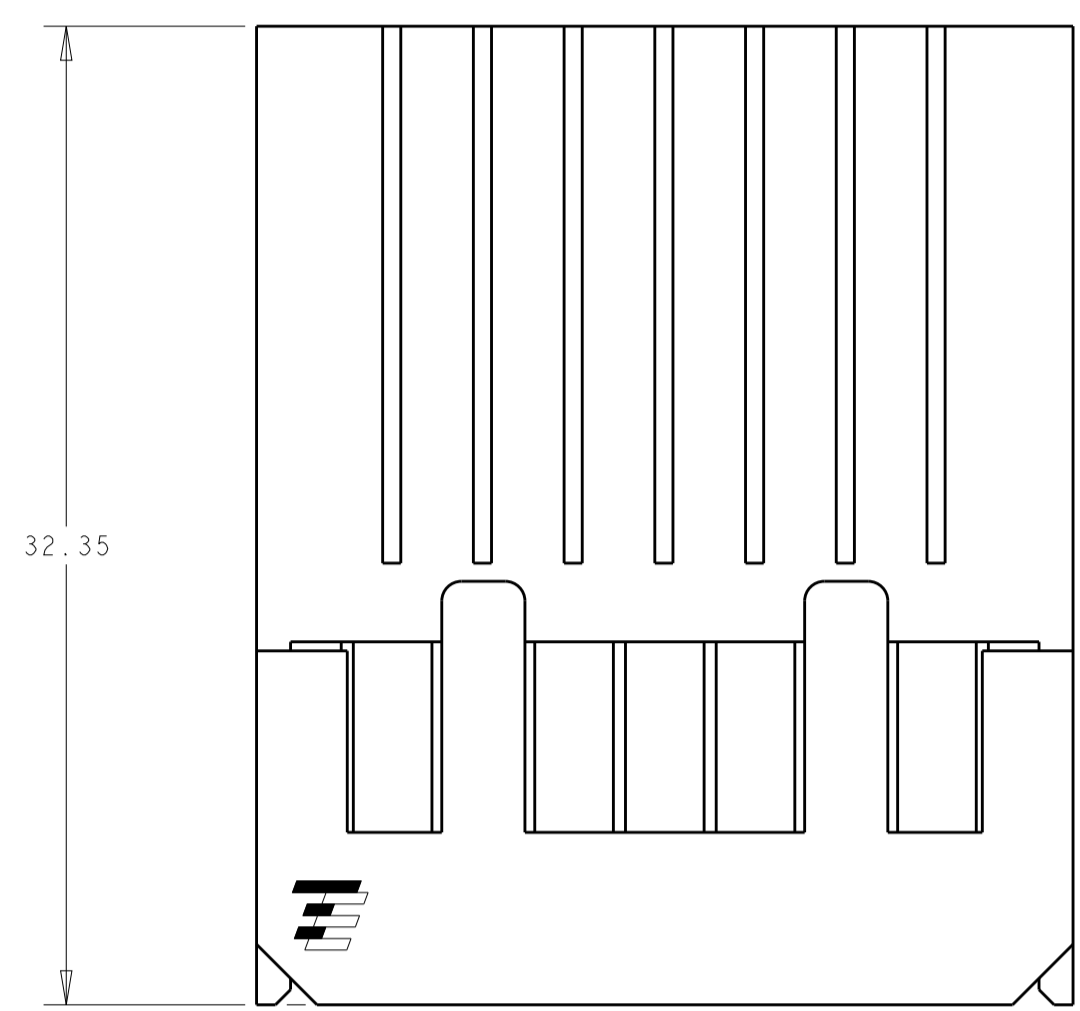
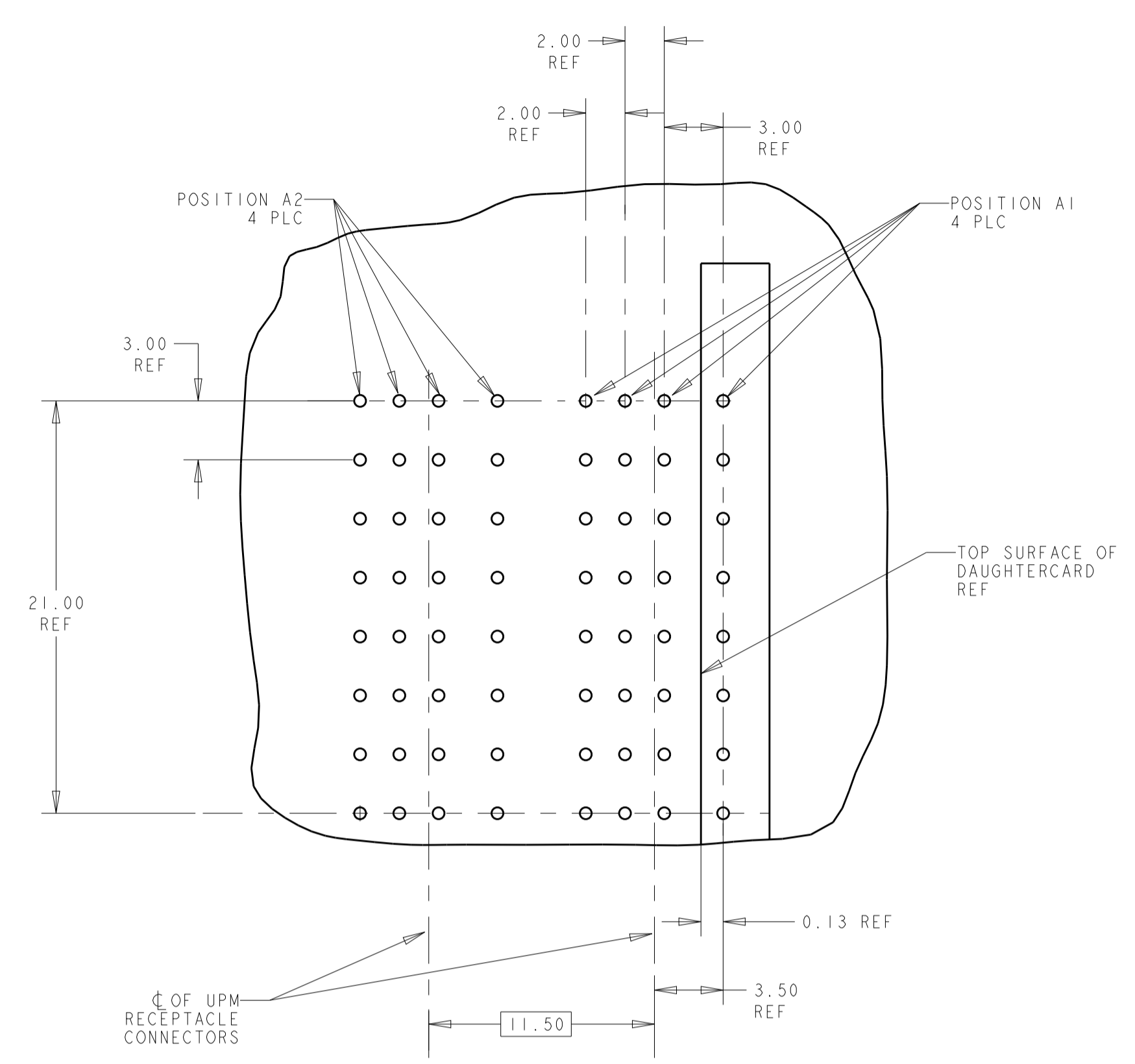
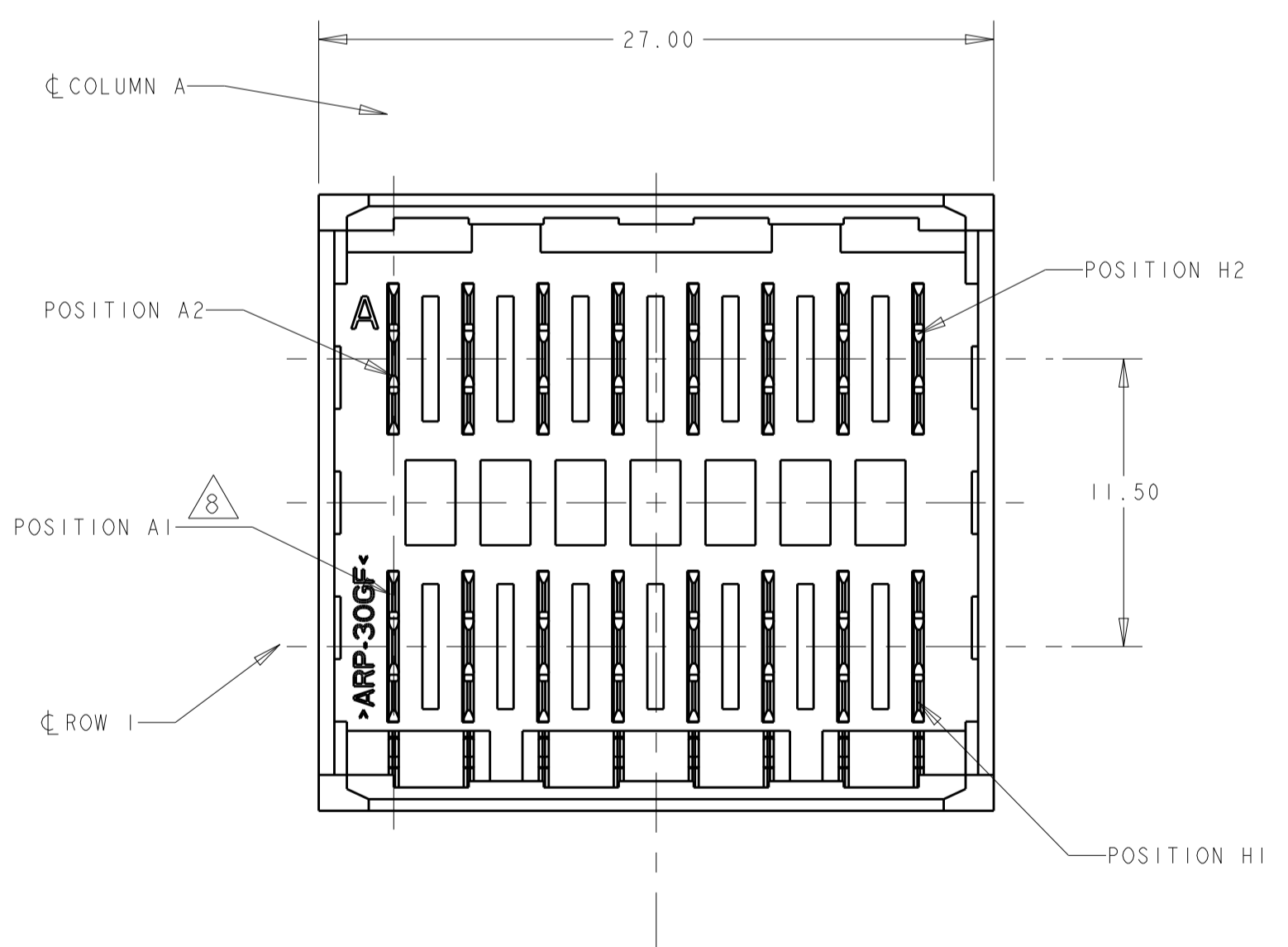
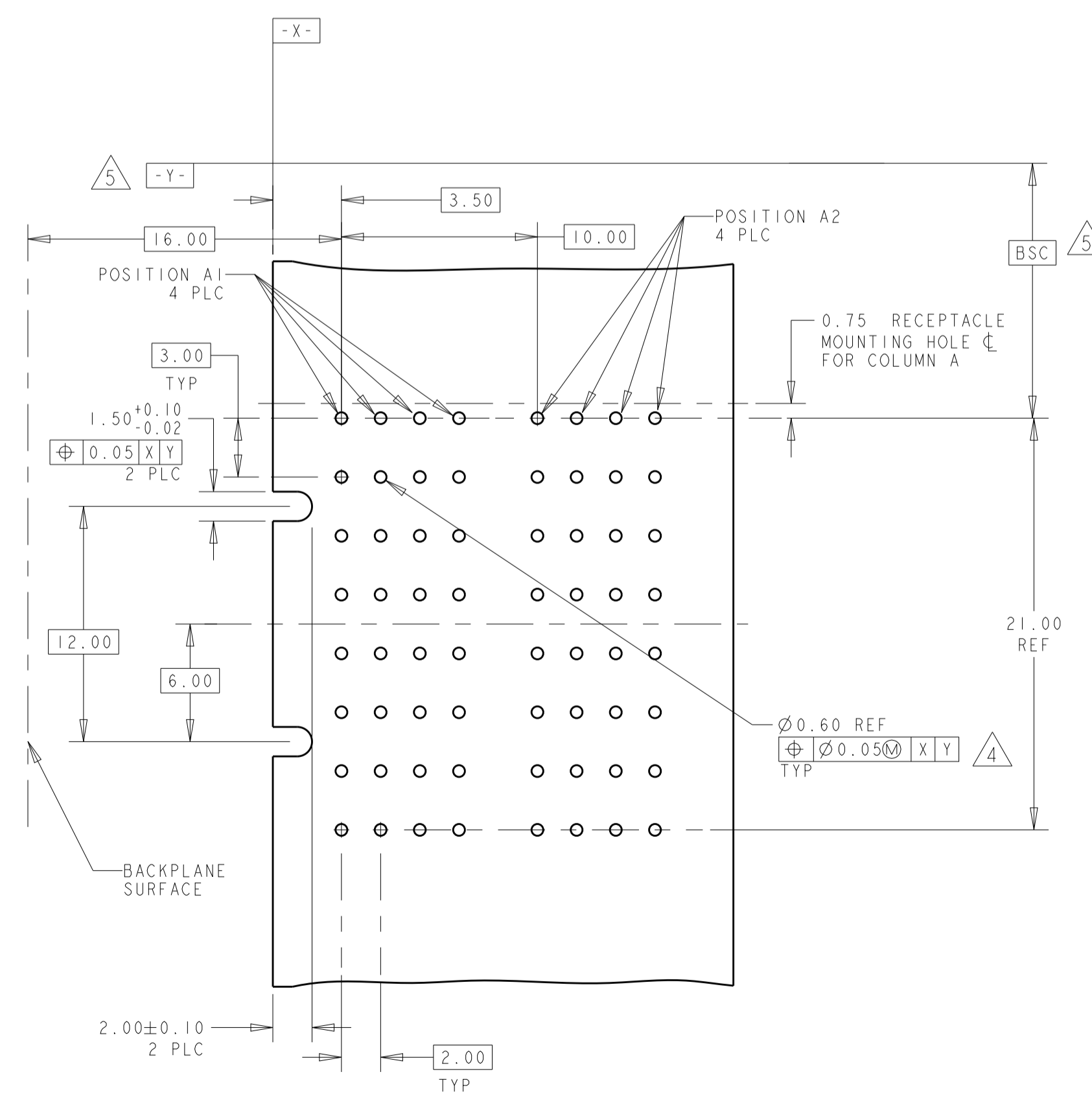
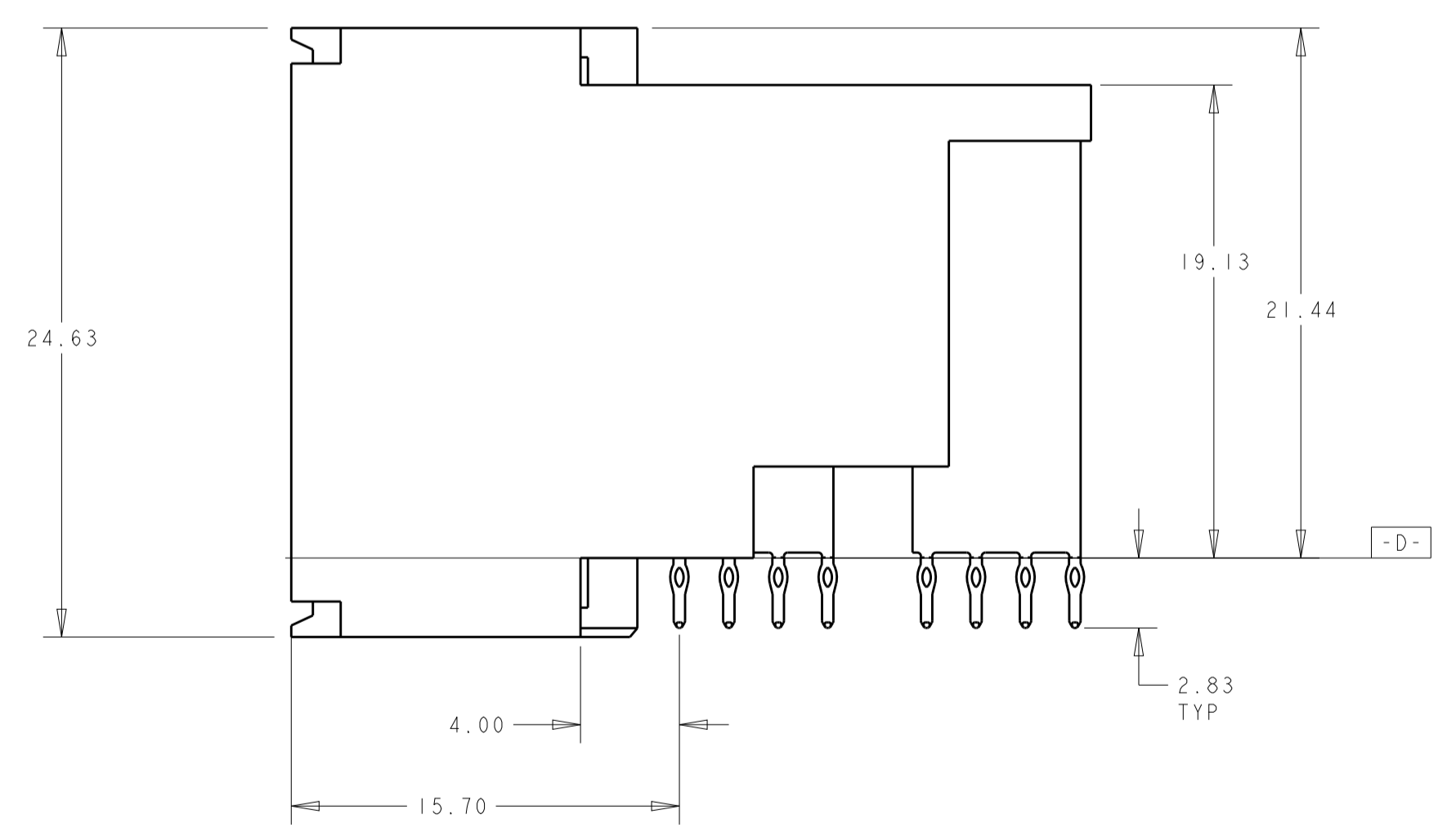
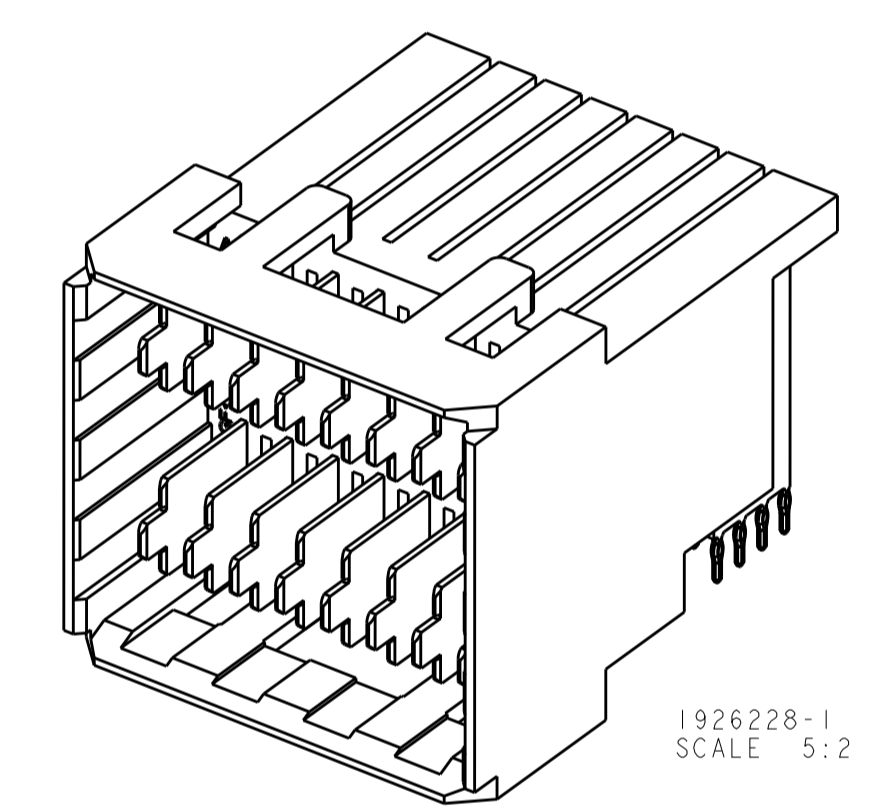
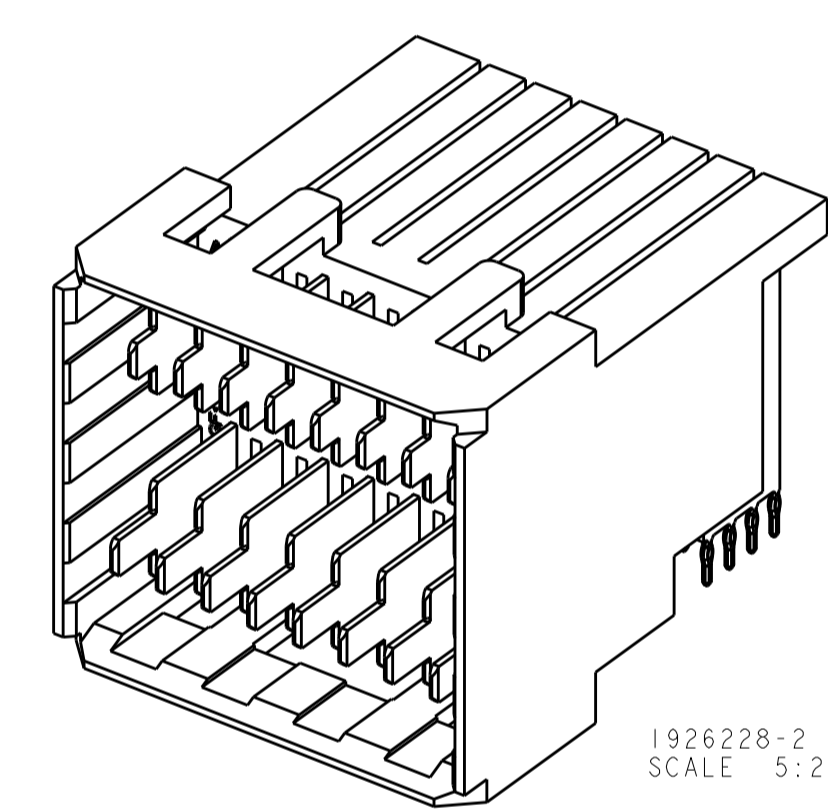


LOC		DIST		REVISIONS				
P	LTN	DATE	DMN	APVD	DESCRIPTION	DATE	DMN	APVD
1		17OCT2012	OL	SZ	FIRST RELEASE			

MATING RECEPTACLE PCB LAYOUT 3



- 1 MATERIAL: HOUSING: POLYESTER. COLOR: BLACK, UL 94 V-0  
CONTACT: COPPER ALLOY.
- 2 FINISH: CONTACT MATING AREA: 0.0076 mm MIN GOLD PLATE OVER 0.00127 mm MIN NICKEL, OR 0.0005 mm MIN GOLD OVER 0.00064 mm PALLADIUM-NICKEL OVER 0.00127 mm MIN NICKEL.  
COMPLIANT TAIL AREA: 0.0005 mm MIN BRIGHT TIN PLATE OVER 0.00127 mm NICKEL UNDERPLATE.
- 3 TAILS OF MATING UPM STYLE RECEPTACLE ARE OFFSET BY .75 mm FROM TAILS OF THIS CONNECTOR. SEE CUSTOMER DRAWING 120992 FOR RECEPTACLE EXAMPLE. SEE APPLICATION SPEC 114-1103 FOR MORE DETAILED DESCRIPTION OF THE TAIL OFFSETS.
- 4 PC BOARD HOLE SPECIFICATIONS:  
 DRILLED HOLE SIZE: 0.700±0.02 mm  
 FINISHED HOLE SIZE: 0.60±0.05 mm  
 PLATING THICKNESS:  
 0.025 - 0.050 mm COPPER  
 0.004 - 0.010 mm HASL TIN  
 0.0005 mm MIN IMMERSION TIN  
 0.0002 - 0.0005 mm OSP  
 0.0001mm MIN IMMERSION SILVER  
 0.0001-0.0005 mm IMMERSION GOLD OVER 0.004-0.005 mm NICKEL
- 5 DATUM AND BASIC DIMENSIONS ESTABLISHED BY CUSTOMER.
- 6 MINIMUM REQUIRED PC BOARD THICKNESS IS 1.44mm.
- 7. CONTACT AREA LUBRICATED WITH BELLCORE APPROVED LUBRICANT. TECHNICAL REFERENCE GR-1217-CORE, ISSUE 1 NOVEMBER 1995.
- 8 POSITION A1 IS AT MATERIAL ID.



RECOMMENDED PCB LAYOUT 6

A1, B1, C1, D1, E1, F1, G1, H1	A2, B2, C2, D2, E2, F2, G2, H2	1892733-2
-	ALL	1892733-1
LONG PIN LOCATION	SHORT PIN LOCATION	PART NO
DIMENSIONS: mm 0 PLC ±.25 1 PLC ±.25 2 PLC ±.25 3 PLC ±.25 4 PLC ±.25 ANGLES ±1°		TOLERANCES UNLESS OTHERWISE SPECIFIED: FINISH <span style="border: 1px solid black; padding: 2px;">2</span>
MATERIAL <span style="border: 1px solid black; padding: 2px;">1</span>		DWN: LORANDO LI 17OCT2012 CHK: SUNY ZHAO 17OCT2012 APVD: SUNY ZHAO 17OCT2012 PRODUCT SPEC: 108-2289 APPLICATION SPEC: 114-13269 WEIGHT: - Customer Drawing
NAME: ASSEMBLY, RIGHT ANGLE HEADER MINIPAK HDE, 2X8 POSITION SIZE: 114-13269 CAGE CODE: 1892733 DRAWING NO: 1892733-2		Tyco Electronics Harrisburg, PA 17105-3608 RESTRICTED TO SCALE: 4:1 SHEET: 1 OF 1 REV: 1